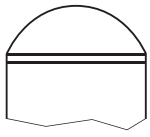
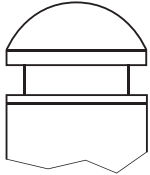


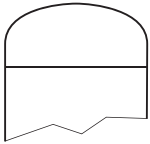
Architectural Bollard Caps



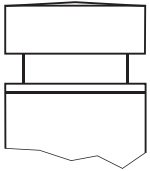
Model	NB Pipe Size	Weight Kg
10-01	100 OD 114	0.5
10-02	125 OD 140	0.8
10-03	150 OD 165	1.1



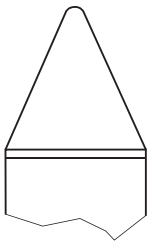
20-00**	80 OD 89	0.5
20-01	100 OD 114	0.75
20-02	125 OD 140	1.15
20-03	150 OD 165	1.7
20-04	200 OD 219	2.9



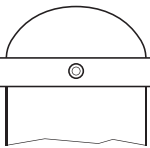
30-01	100 OD 114	0.6
30-02	125 OD 140	0.9
30-03	150 OD 165	1.2



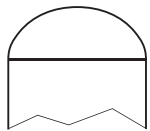
40-01	100 OD 114	0.85
40-02	125 OD 140	1.3
40-03	150 OD 165	1.9



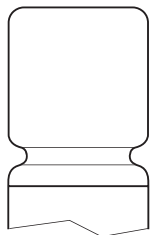
50-00	90 OD 102	0.5
50-01	100 OD 114	0.6
50-02	125 OD 140	0.9
50-03	150 OD 165	1.2



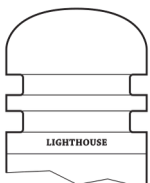
60-04	200 OD 219	2.8
60-05	300 OD 324	5.7



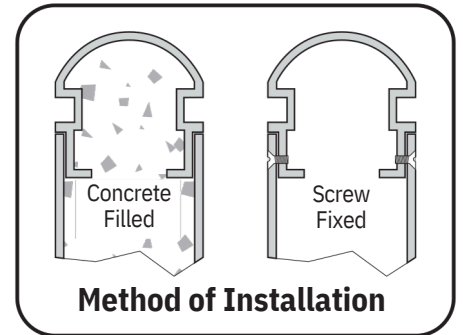
THIS CAP IS FOR STAINLESS STEEL PIPE		
70-03	150 OD 169	1.2



80-01**	80 OD 89	0.8
80-02	100 OD 114	1.4



90-03	150 OD 165	2.1
-------	------------	-----



FINISH

- * Mill
- Powder coat
- Polish
- ** Fits removable bollards

Important: Ensure installation and maintenance are properly executed to obtain maximum performance, efficiency and durability from your Lighthouse product.

Disclaimer: While every care has been taken with the details on this specification sheet Lighthouse Bollards & Caps accepts no responsibility for any inaccuracies. Lighthouse Bollards & Caps also reserves the right to change these specifications without notice to always ensure that you are receiving a superior product.

Lighthouse Bollards & Caps

Phone: 0403422149
 Email: lighthouse.bollards@outlook.com
www.lighthouse-bollards.com.au
 Australian owned company